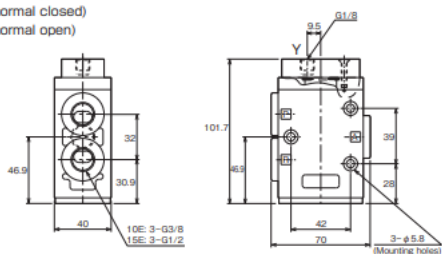


VC 104 **3H*/5H*** Spool Poppet Type (Type H)
3H*-10/15/5H*-15 Unit: mm

Master Valves

3-port valve/Direct type
3HC-**-E-P(normal closed)
3HP-**-E-P(normal open)

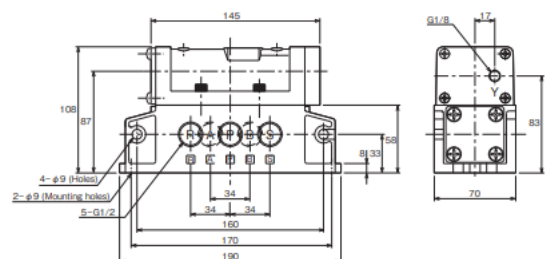


5-port valve/Valve for manifold
5HR-15M-P(return)

Spool Poppet Type (Type H) **3H*/5H***
Unit: mm

Master Valves

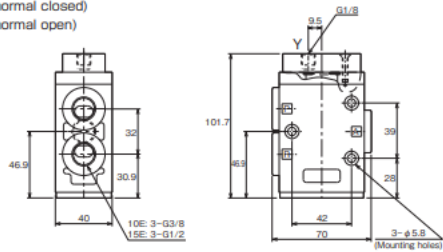
5-port valve/Sub-plate type/With stack manifold
5HR-15S(N)-P(return)



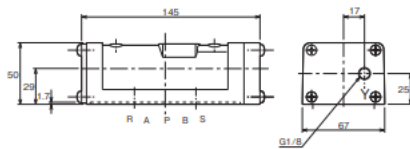
VC 104 **3H*/5H*** **Spool Poppet Type (Type H)**
3H*-10-15/5H*-15 Unit: mm

Master Valves

3-port valve/Direct type
3HC-**-E-P(normal closed)
3HP-**-E-P(normal open)



5-port valve/Valve for manifold
5HR-15M-P(return)

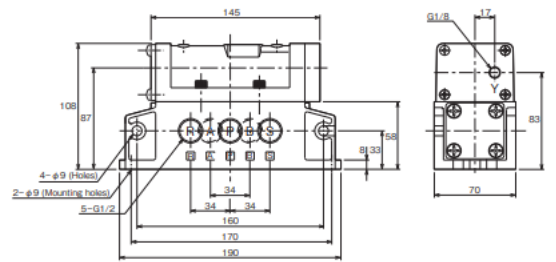


5HD-15M-P(detent)

Unit: mm **Spool Poppet Type (Type H)**
3H*-10-15/5H*-15 **3H*/5H***

Master Valves

5-port valve/Sub-plate type/With stack manifold
5HR-15S(N)-P(return)



5HD-15S(N)-P(detent)
5HC-15S(N)-P(closed center)
5HE-15S(N)-P(exhaust center)

